

# COUNTRY CLUB COVE HANSON GRANT - MARTIN COUNTY, FLORIDA

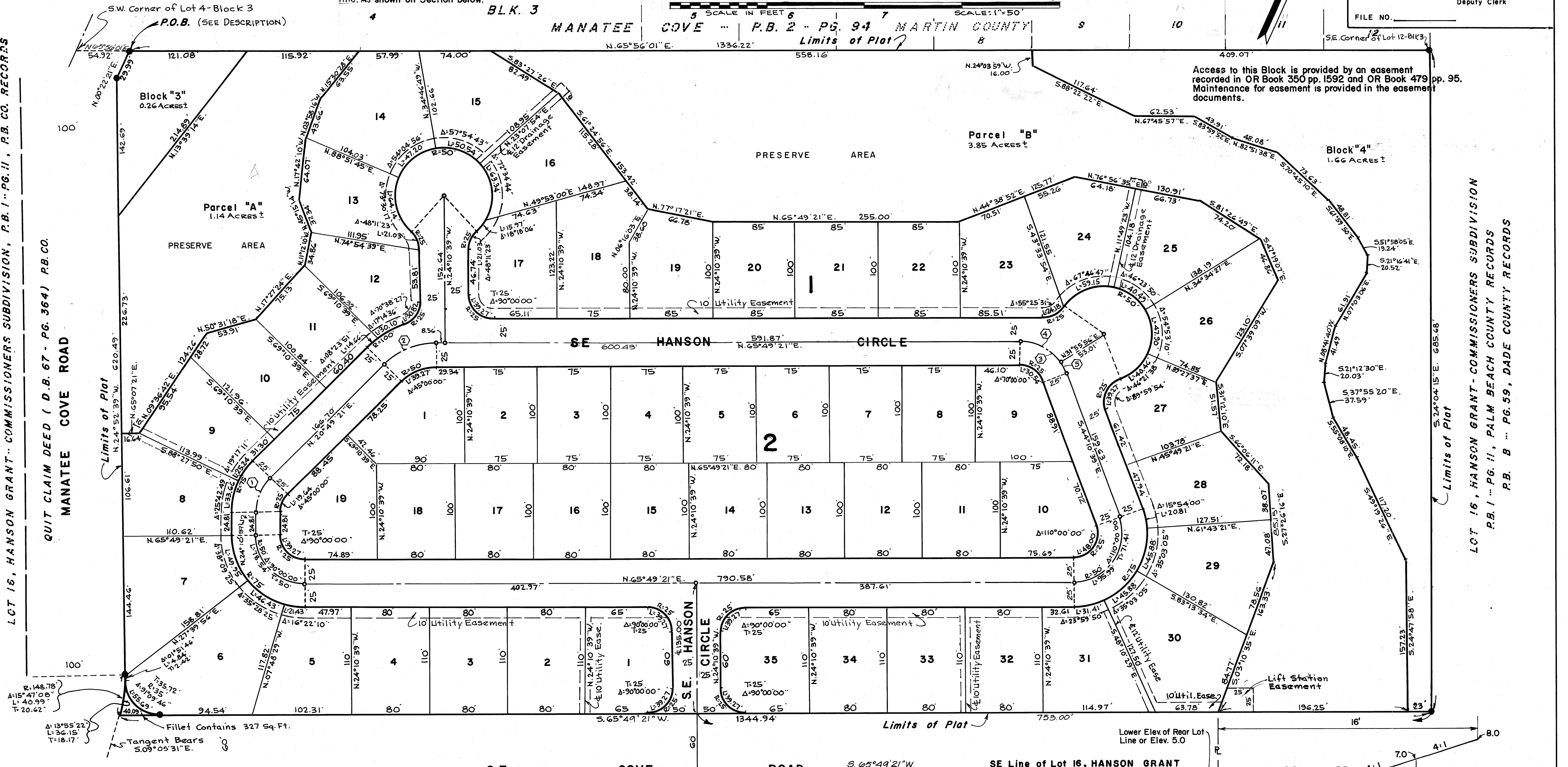
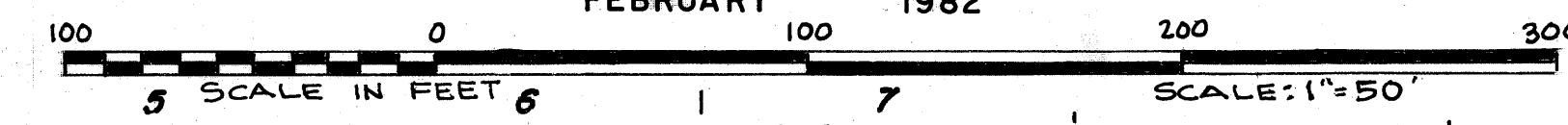
A REPLAT OF PART OF LOT 16, HANSON GRANT-COMMISSIONERS SUBDIVISION  
AS RECORDED IN PLAT BOOK 1, PAGE 11, PALM BEACH COUNTY RECORDS.

GEE & JENSON  
ENGINEERS-ARCHITECTS-PLANNERS, INC.  
WEST PALM BEACH, FLORIDA  
FEBRUARY 1982

**SHEET 2 OF 2**  
I, LOUISE V. ISAACS, Clerk of the CIRCUIT COURT of MARTIN COUNTY, FLORIDA, HEREBY CERTIFY that this PLAT was FILED for RECORD in PLAT BOOK 9 PAGE 19, MARTIN COUNTY, FLORIDA, PUBLIC RECORDS, this 20th day of October, 1982.  
LOUISE V. ISAACS  
CLERK of the CIRCUIT COURT  
MARTIN COUNTY, FLORIDA  
By: \_\_\_\_\_ Deputy Clerk  
FILE NO. \_\_\_\_\_

**NOTES**  
● denotes Permanent Reference Monument.  
○ denotes Permanent Control Point.  
Bearings shown hereon are relative to the S.E. Line of Lot 16, HANSON GRANT bearing S.65°49'21"W.  
No lots in Blocks 1 and 2 shall be subdivided to make smaller lots. Only to make larger lots.  
No access to lots in Blocks 1 and 2 from Manatee Cove Road, or S.E. Cove Road, shall be permitted.  
Blocks "3" and "4", as platted, are for future development.

Bikeways shall be constructed on the East side of Manatee Cove Road and on the North side of S.E. Cove Road, as per County standard. No structure as defined in Section 14-13 Martin County Code shall be constructed waterward of the 8.0 ft. N.G.V.D. elevation line. As shown on Section below.

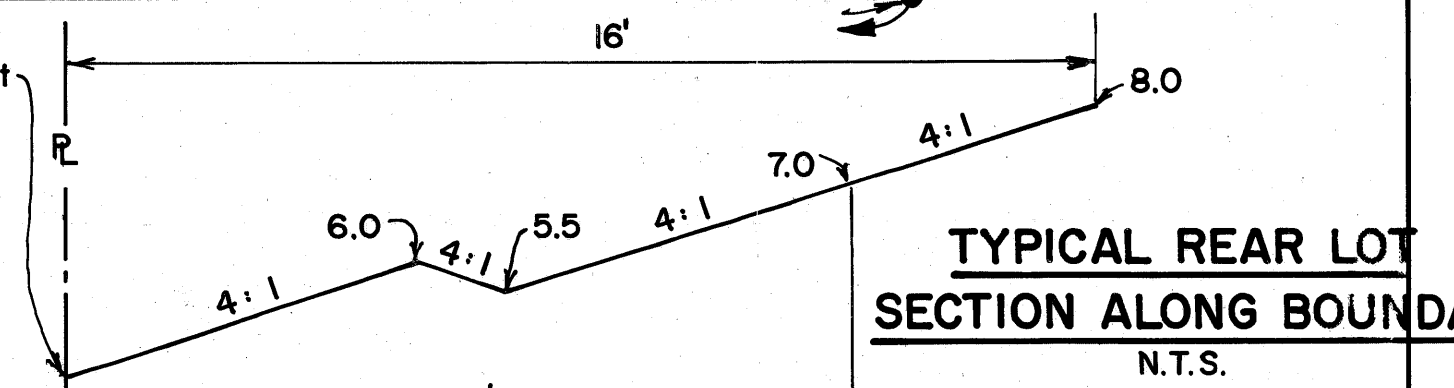


QUIT CLAIM DEED ( D.B. 67 - PG. 364 ) P.B. CO.  
MANATEE COVE ROAD

LOT 16, HANSON GRANT-COMMISSIONERS SUBDIVISION  
P.B. 1 - PG. 11, PALM BEACH COUNTY RECORDS  
P.B. B - PG. 59, DADE COUNTY RECORDS

Denotes Curve Number & Location

Curve Number	Curve Location	Radius (R)	Delta (Δ)	Length (L)	Tangent (T)
①	1	R=50'	Δ=45°00'00"	L=39.27'	T=20.71'
②	2	R=75'	Δ=45°00'00"	L=58.90'	T=31.07'
③	3	R=50'	Δ=70°00'00"	L=61.09'	T=35.01'
④	4	R=50'	Δ=56°06'35"	L=48.97'	T=26.65'
⑤	5	R=50'	Δ=13°53'25"	L=12.12'	T=6.09'



UNPLATTED GOVT. LOT 4 - SEC. 30-38-42